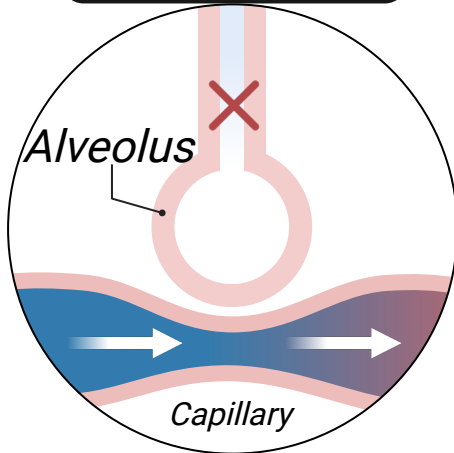


# Ventilation-Perfusion Ratio (V/Q)

## Shunt perfusion

Perfusion without ventilation

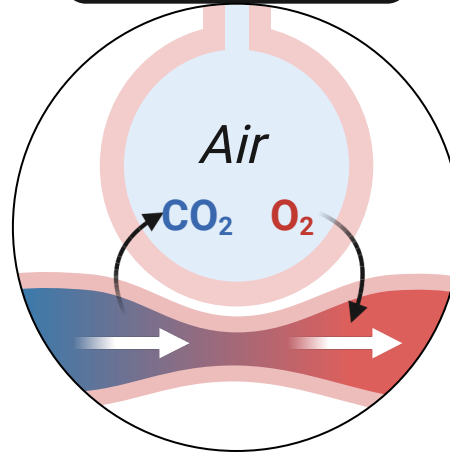


Wasted perfusion  
(e.g., airway obstruction,  
pneumonia)

Low V/Q

## Normal

Perfusion and ventilation

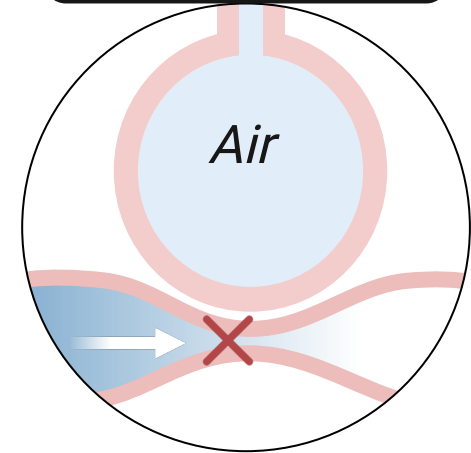


Gas exchange between  
capillary and alveoli and  
blood oxygenation

V/Q = 0.8

## Dead space ventilation

Ventilation without perfusion



Wasted ventilation  
(e.g., pulmonary embolism,  
cardiogenic shock)

High V/Q

Zero

V/Q

Infinity